

Please link to: <http://www.in360.com/tours/tour.php?MLS=sm-shady&enlarge=1> to see inspiring Tours, Photos and You Tube.

**Saddlebrook Lakes is a one-of-a-kind community located in NE Naples, Florida. Twenty private, single family, individually gated, estate size home sites are located on a pristine deep water 150-acre lake, completely surrounded by 60,000 acres of preserve.**

---

Saddlebrook Lakes owns this magnificent 150 acre lake, and the 60+ foot wide path around the lake. All home sites are located on the South side of the Lake; the other 3 sides of the lake are natural preserve, which enhances the magnificent unobstructed water views. Nature lovers can enjoy a variety of birds, including: hawk, osprey, swallow-tailed kite, bald eagle, wild turkey, wood stork and many other FL wading birds. Fishermen can test their skills with the abundant bass and bluegill. Boaters can relax with fantastic sunrise & sunset boat rides.

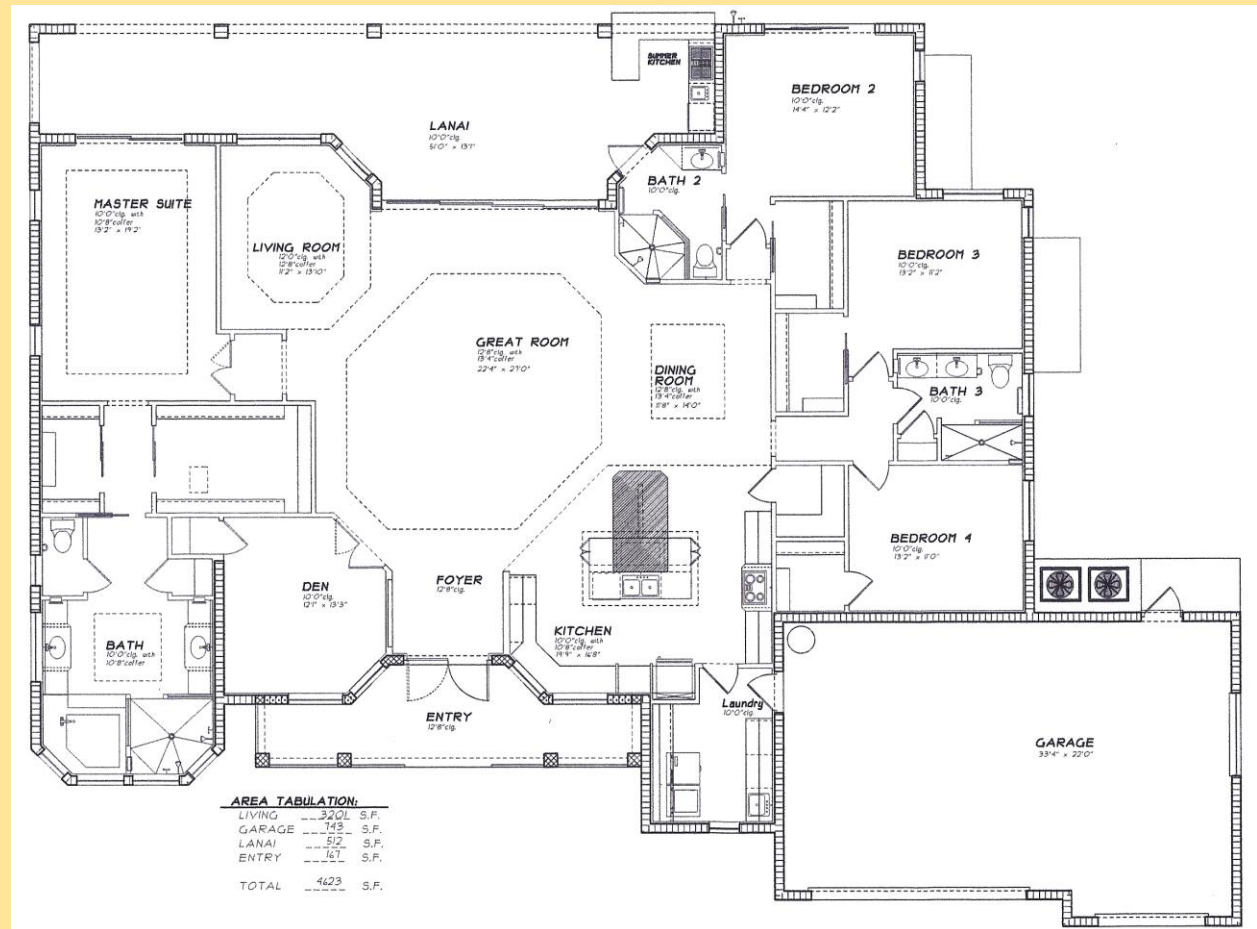
There is also a 12 mile loop trail, with board walk, at the immediately adjacent Bird Rookery Swamp, which is part of the 60,000 acres of Corkscrew Ecosystem Watershed. The property is very close to good quality schools, is in proximity of Twin Eagles Golf Community, and has convenient 6 lane highway access to all major points in SW Florida.

---



**This home is an exclusive new construction of an "Old Florida Architecture" Estate Home with 3200 Sq. Ft. under air, featuring: 4 bedrooms, 3 full bathrooms, den, front porch, oversized 3-car garage, lanai, and a 30' x 13' pool with spa, 60' x 20' deck with pavers & screen enclosure.** The kitchen has a large central island for eating and storage, a large walk-in pantry, wine storage and cooler, high quality KitchenAid stainless steel appliances including double convection ovens, abundant and very attractive cabinets, and beautiful granite counter tops. The kitchen is open to the large open living area and formal dining area, which face the lake. The 13' 4" high coffer ceilings with crown molding in the living area, combined with 16' wide and 8' high sliding glass doors, in addition to the large picture windows, and the "picture frame" pool cage, all enhance the breathtaking lake & preserve views. The floors of the house, lanai and pool area are all several feet higher than the maximum lake water height, to further enhance the lake and preserve views. The large lanai is under roof and includes an outdoor kitchen with granite counter top eating area and cooking area. The front porch has a 12' 8" high ceiling and paver floor, with double French door entry to the foyer, and with large transom window above the door. The foyer also has 12' 8" high ceiling and opens to the huge living area with the magnificent views. The den has a closet, wood floor and also has double French door entry to the open living area.

The Master Suite is absolutely stunning, with: 8' x 8' sliding glass door access to the lanai and views to the lake, 10' 8" high coffer ceilings with crown molding, with very large "his and her" walk-in closets, two 7' wide vanities with lots of cabinet and drawer space, walk in double shower, large corner jet tub, and lots of natural light. The primary Guest Suite also has 8' x 8' sliding glass door access to the pool and view to the lake. The Guest Suite bathroom has direct access to the lanai and pool. All 4 bedrooms have large walk in closets and views to the lake. All 3 bathrooms have walk-in showers, attractive ceramic wall tile, and granite counter tops. The laundry also has abundant upper and base cabinets with granite counter top. The oversized 3-car garage is finished and painted, and the floor is finished with epoxy.



**Throughout the entire house are: many architectural symmetries, lots of natural light, abundant and beautiful high quality cabinets, beautiful granite counter tops, 8' high doors, 5+'' baseboard, and 20'' porcelain floor tiles.** The house meets the latest hurricane code with all impact glass and impact outside doors, along with all the other hurricane construction requirements. The house has a steep pitch metal roof, and large attractive paver driveway and walkway. The entire lot is covered with grass sod, with irrigation, and substantial Florida landscaping. There is a metal security fence along the front property line.

This beautiful home is ready to go, including: landscaping, all lighting fixtures, and full security system. It is prewired for abundant cable, phone and speaker outlets. Get ready to enjoy nature at its absolute best, in the comfort of your luxurious Old Florida Estate Home.

**Construction will be completed in approximately 7 months.**